

Focus Hotel Premium Warszawa****

The modern 4-star hotel will open in the first quarter of 2022. Located at ul. Suwak 15, close to the Chopin Airport, it will be both a convenient base for exploring the city and an ideal venue for business meetings. The bright and modern rooms will provide comfort and relaxation, while the spacious conference area will allow you to host any event. Hotel guests will be able to enjoy free use of the sauna and gym available 24 hours a day.

Location:

- 4 km from Chopin Airport
- 4.5 km from Warsaw Central Train Station
- 6 km from the Palace of Culture and Science
- 1 km from the Żwirki i Wigury train station – convenient connection with the city centre, Chopin Airport, Modlin Airport



Rooms



- 234 rooms
- 2 Junior Suite apartments 60 m²
- 2 apartments with kitchenette 85 m²
- 16 premium rooms
- air conditioning
- work desk
- safe
- tea and coffee set
- refrigerator
- hair dryer



Restaurant and bar



- spacious restaurant for up to 200 guests
- international cuisine menu
- organisation of weddings receptions, parties, special meetings and business mixers events
- rich breakfast buffet with a unique Focus service – sandwich and coffee to go
- the hotel lobby bar – the perfect place for an evening drink
- room service



Conference area and additional services



- ballroom with an area of 620 m² that can be divided into four separate conference rooms
- 8 conference rooms – each 50 m²
- foyer 310 m²
- fitness room
- sauna
- underground garage for 156 cars



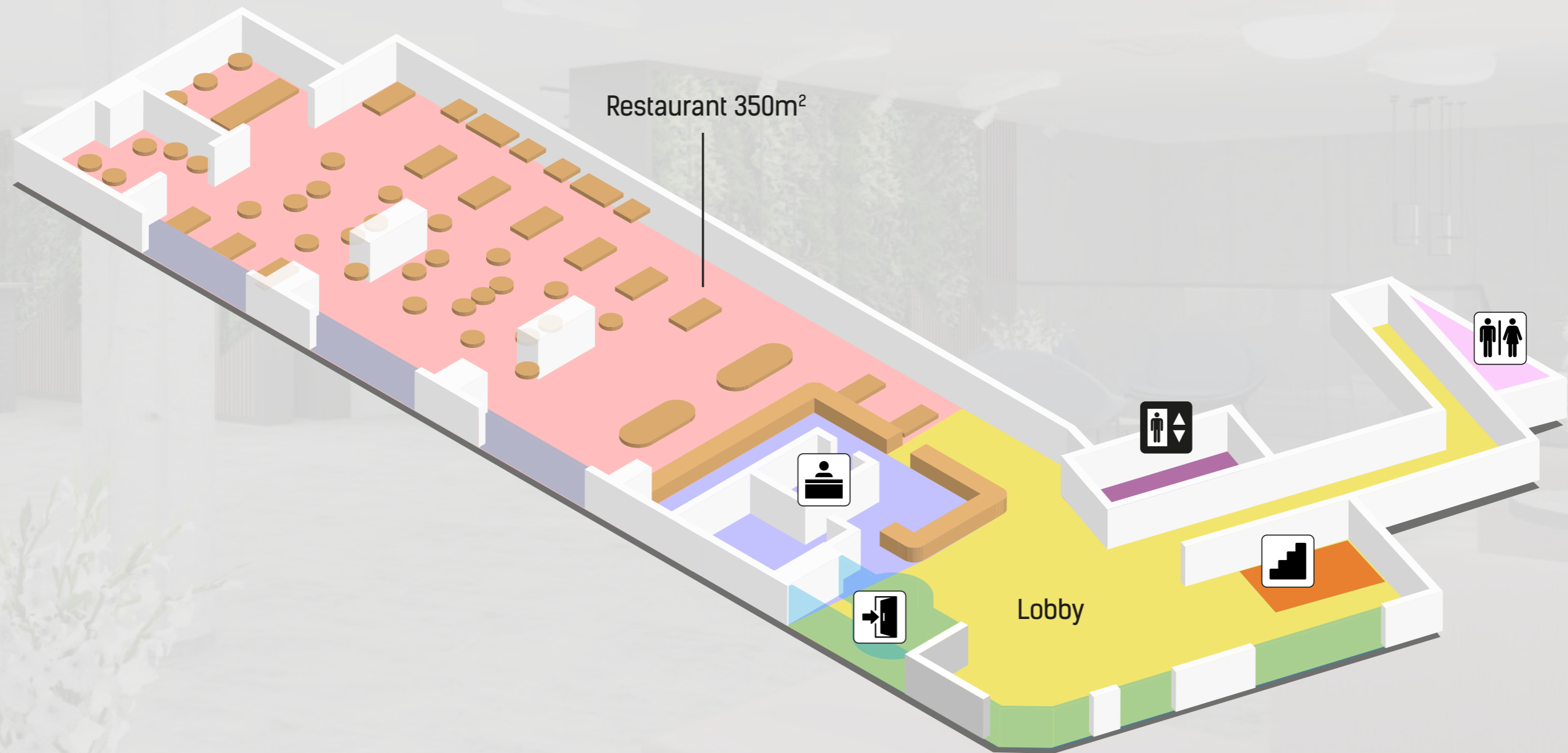
focushotel
PREMIUM



FLOOR 0



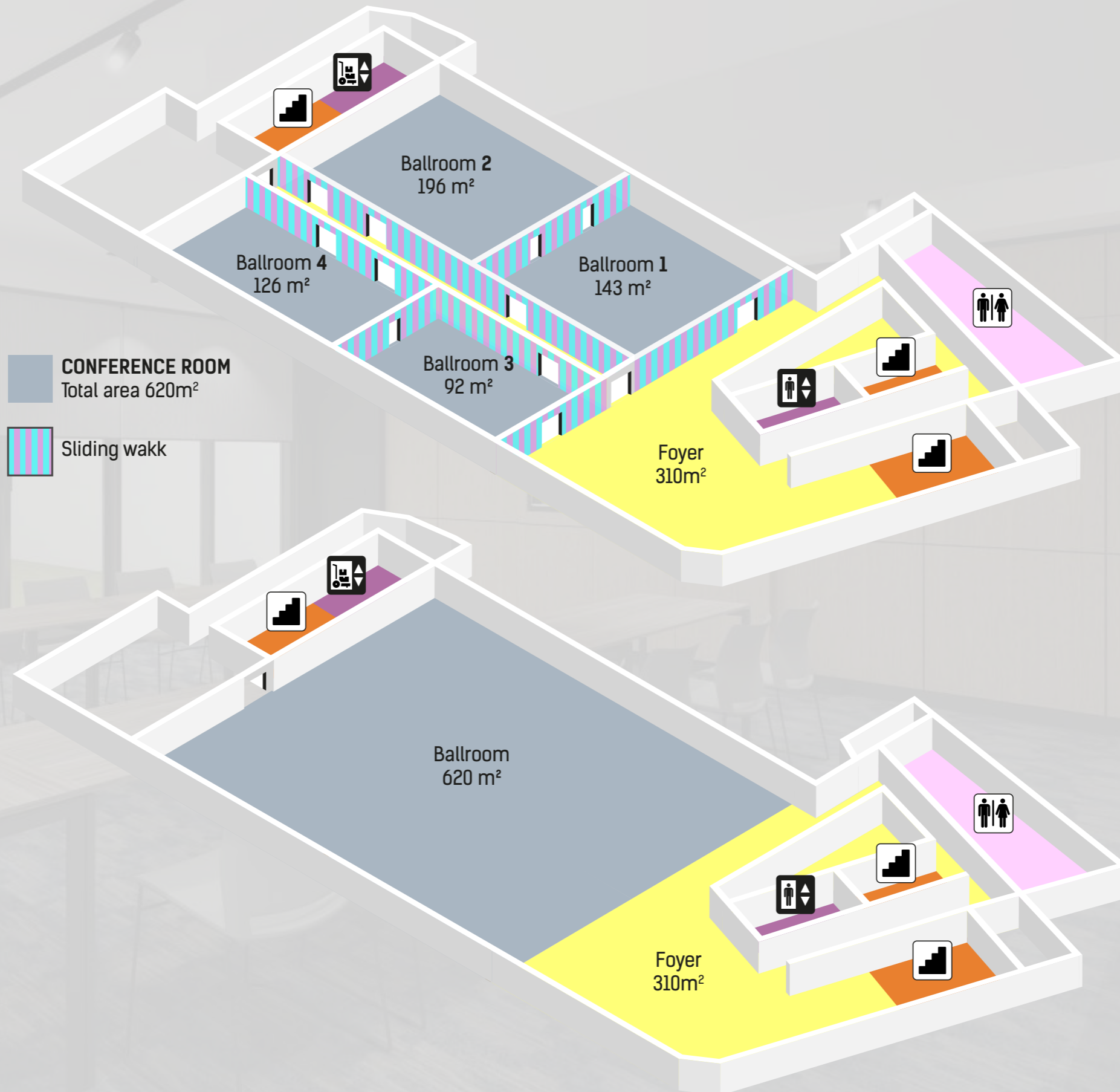
*focus*hotel
PREMIUM



FLOOR 1



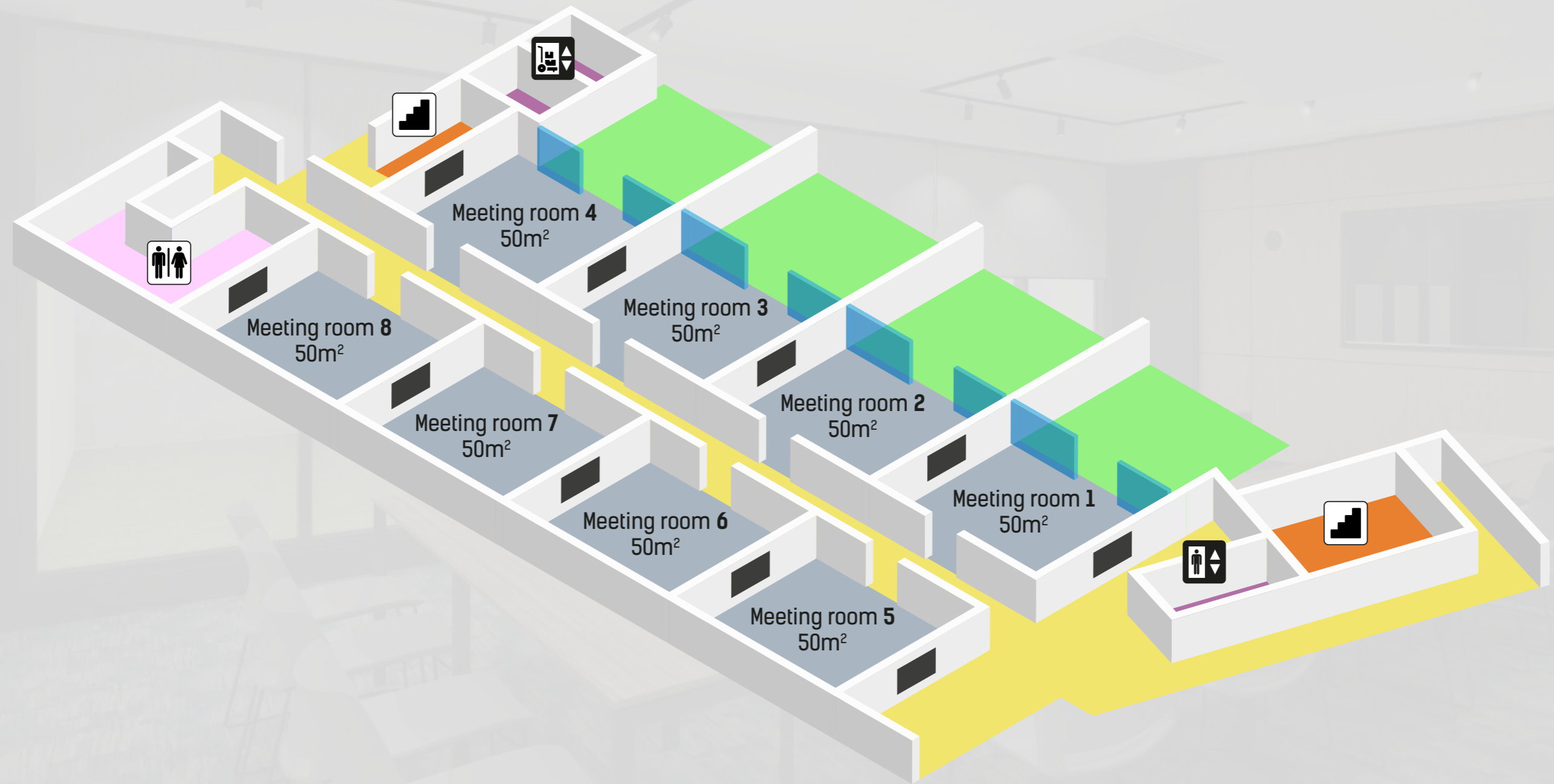
focushotel
PREMIUM



FLOOR 3



focushotel
PREMIUM



CONFERENCE ROOMS

	Floor	height	Area	Boardroom	Theatre arrangement	Classroom arrangement	U - shaped arrangement	Square shaped arrangement	Cabaret arrangement	Banquet arrangement 10 people table	Banquet arrangement 12 people table	Banquet arrangement with parquet	Cocktail arrangement
Ballroom	1	4,6	620		550	360	90	120	288	420	504	360	600
Ballroom 1	1	5,1	143		120	60	41	54	48	60	72	50	140
Ballroom 2	1	5,1	196		160	90	48	60	72	90	108	80	190
Ballroom 3	1	5,1	92		70	44	35	46	32	40	48	40	90
Ballroom 4	1	5,1	126		100	77	47	58	48	60	72	60	120
Ballroom 1+2	1	4,6	333		300	182	74	88	144	180	216	150	330
Ballroom 3+4	1	4,6	214		190	126	68	76	96	120	144	100	210
Ballroom 2+4	1	4,6	365		320	189	57	84	144	180	216	140	360
Foyer	1	2,5	310										
Meeting room 1	3	2,45	50	18	40	24	21	26	21	20	24	-	40
Meeting room 2	3	2,45	50	18	40	24	21	26	21	20	24	-	40
Meeting room 3	3	2,45	50	18	40	24	21	26	21	20	24	-	40
Meeting room 4	3	2,45	50	18	40	24	21	26	21	20	24	-	40
Meeting room 5	3	2,45	50	18	40	24	21	26	21	20	24	-	40
Meeting room 6	3	2,45	50	18	40	24	21	26	21	20	24	-	40
Meeting room 7	3	2,45	50	18	40	24	21	26	21	20	24	-	40
Meeting room 8	3	2,45	50	18	40	24	21	26	21	20	24	-	40

